



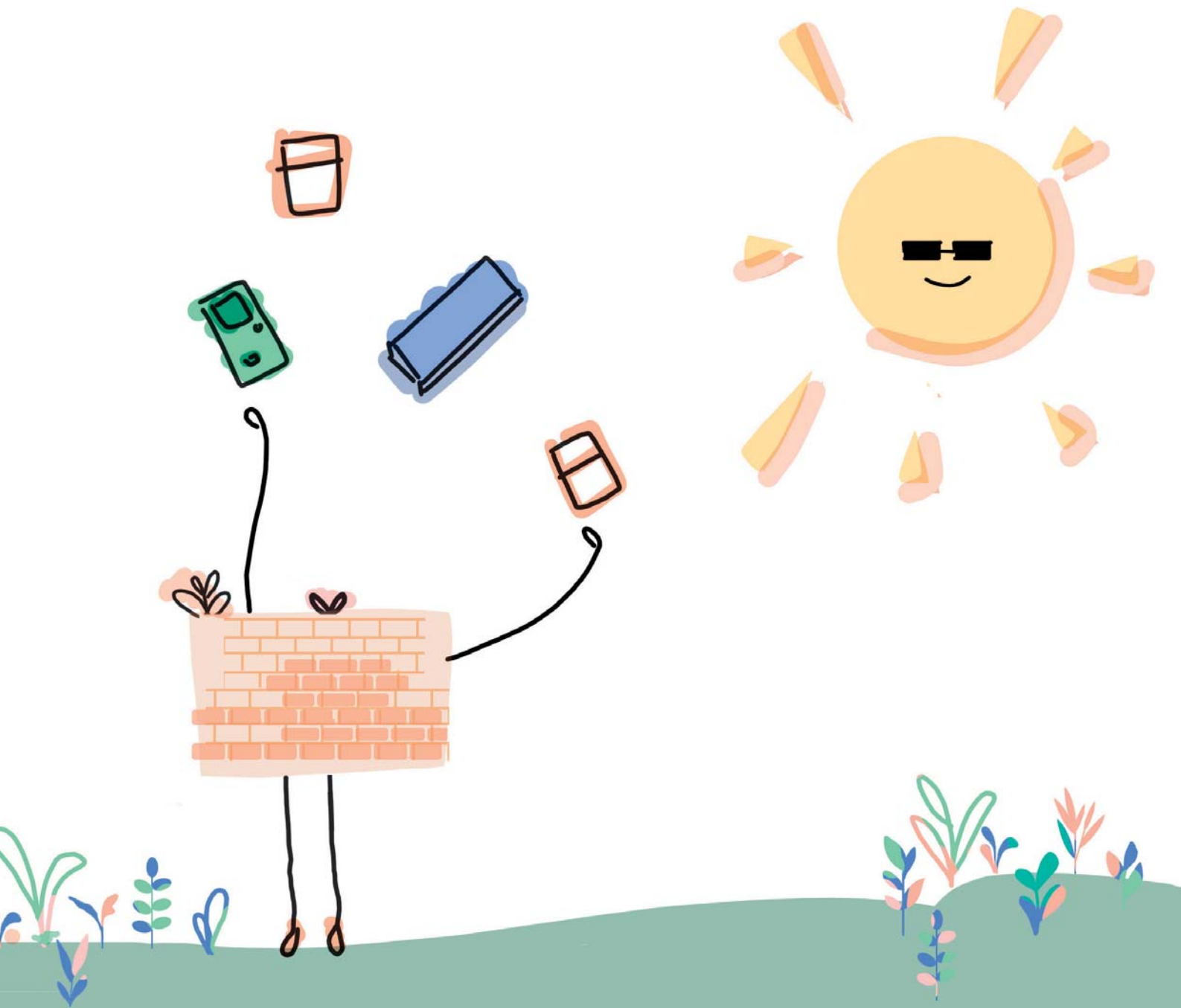
# WHAT MAKES A BUILDING?

FOSTER + PARTNERS

What makes a building?  
I wondered aloud  
Is it just lines and shapes?  
I can't work it out

Start with some ground  
It may be hilly or flat  
Dig a big hole  
Where the building will be sat





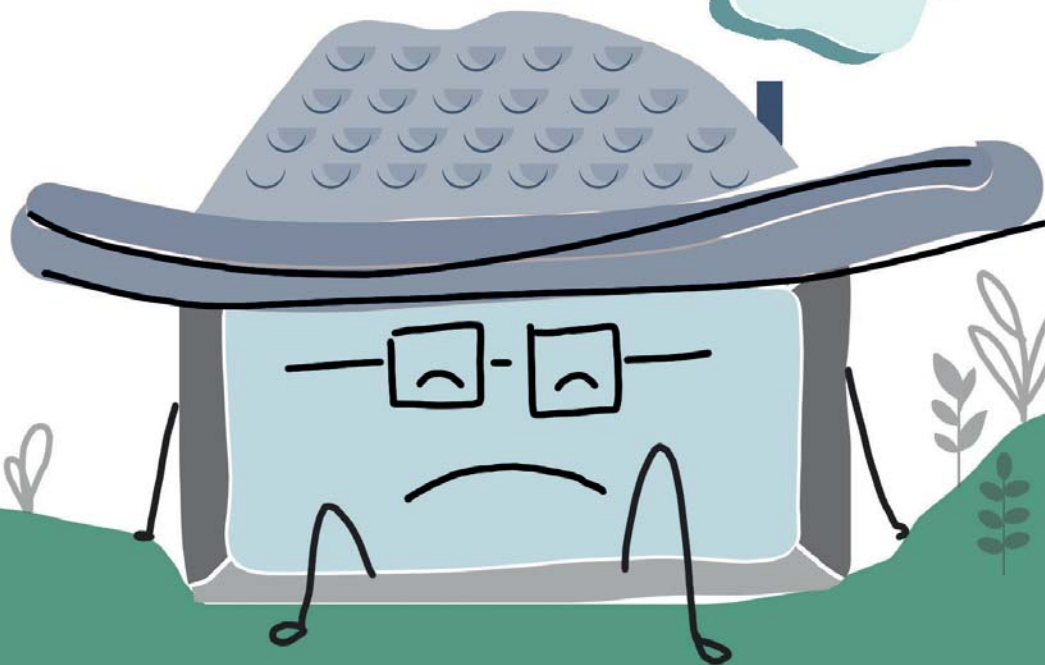
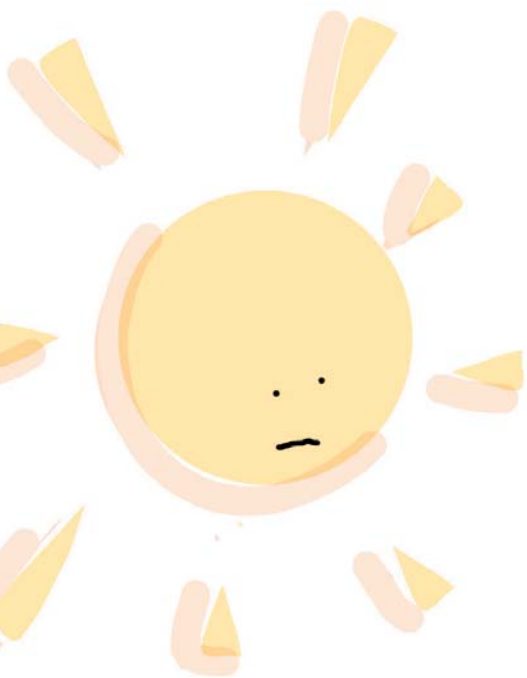
This makes the base  
Like the roots of a tree  
To keep it strong and stable  
So it won't fall on me

Then come the walls  
And doors to go about  
Maybe some windows  
To let the inside-out

The roof is laid above  
To keep us dry in the rain  
Chairs, cushions and curtains  
So it isn't so plain

And that's a building  
But wait, how could I have missed  
The people that live here  
The most important bit!

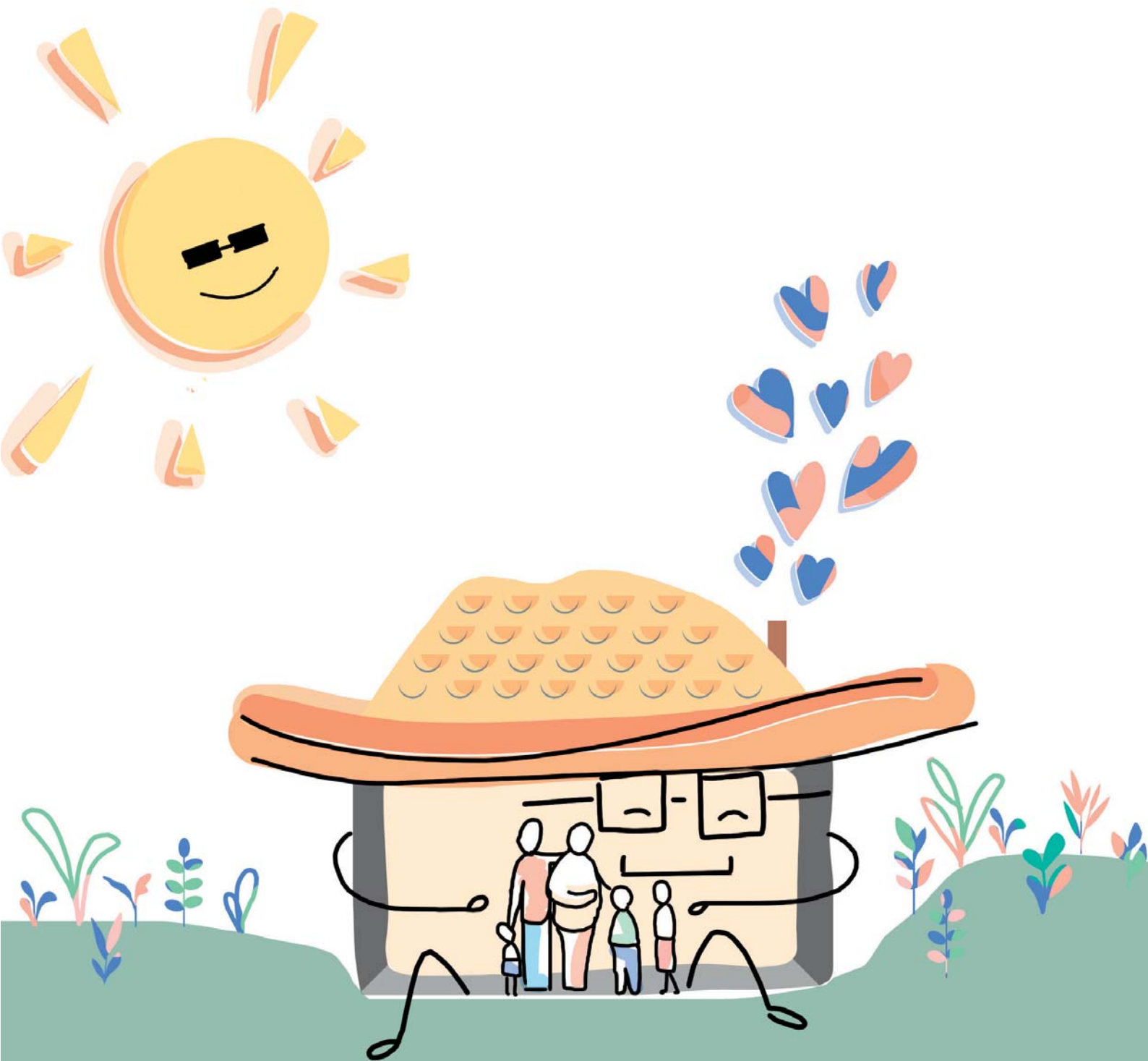






An empty building  
Is the saddest thing  
Fill them with people  
And that's when they sing

A building therefore  
Is just incomplete  
Without you inside it  
To make its heart beat.



FOSTER + PARTNERS